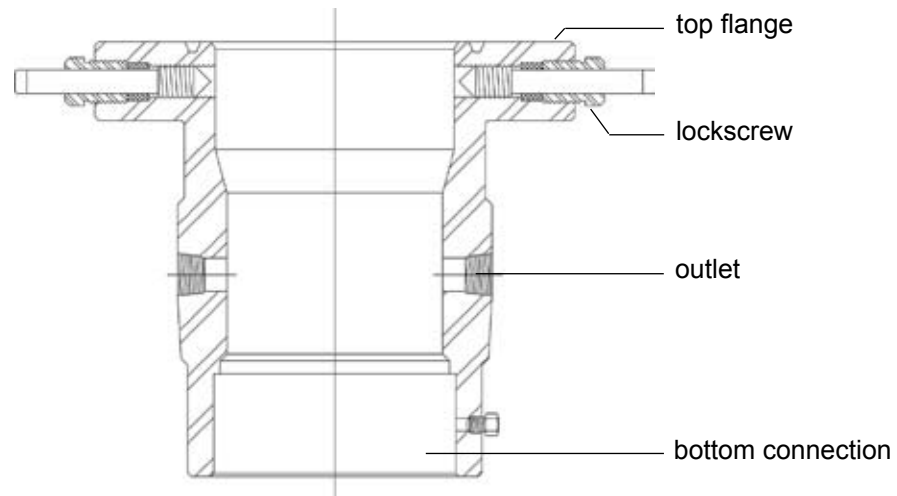


TL Tubing Head



TL Tubing Head

The TL Tubing Head is designed for low pressure and shallow well service and is available with threaded or slip-on for welding bottom connection. Normally outlets are two 2" LP or flanged. Flanged outlets are prepared to accept V-R plugs, which allows for removal or repair of full opening valves under pressure.

This tubing head accepts A-1, BA-1, BA-2 and WA-1 tubing hangers. Lockdown screws are provided in top flange to ensure seal of hangers and well control.

Main Design and Construction Features:

- Bottom Connection**
 - The standard bottom connection can be furnished with slip-on weld or female thread 4 1/2", 5 1/2", and 7".
- Top Connection**
 - 7 1/16 - 2000, 3000 and 5000 API flanged.
- Side Outlets**
 - The standard tubing head has two 2" (50.8 mm) LP outlets.

Dimensional Data for Type TL Tubing Heads

Top Flange Size	WP	Bottom Connection	Outlets*	Maximum Suspended Tubing Size	Approx. Height	
7 1/16	2000	4 1/2" - 7"	2" LP	4 1/2	14.1	in
179.4	13.8 MPa	114.3 - 177.8	50.8	114.3	358	mm
7 1/16	3000	4 1/2" - 7"	2" LP	4 1/2	14.1	in
179.4	20.7 MPa	114.3 - 177.8	50.8	114.3	358	mm
7 1/16	5000	4 1/2" - 7"	2" LP	4 1/2	14.1	in
179.4	34.5 MPa	114.3 - 177.8	50.8	114.3	358	mm

* Also available with extended flanged side outlets

When ordering Crown Tubing Heads, please specify the following information:

- | | |
|---|---|
| 1) Crown Model | 4) Side Outlets |
| 2) Bottom Connection | a) Threaded or flanged |
| a) Slip-on weld, female thread or male thread | b) Size |
| b) Casing size | 5) Standard or H ₂ S service |
| 3) Top Connection | 6) Equipment to be used off outlets |
| a) Flange size | 7) PSL requirement |
| b) Flange working pressure | 8) API material class |
| | 9) API temperature rating |

Available to meet all appropriate API-6A requirements.