

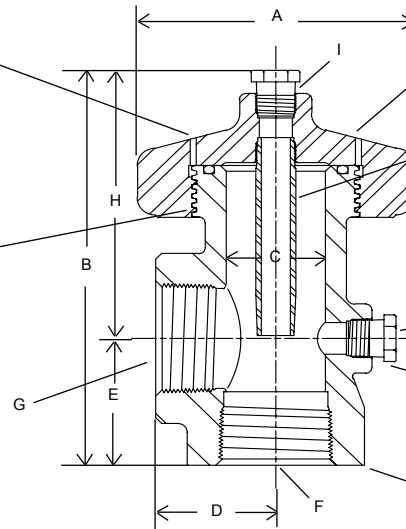
## Pig Entry Tees

### SAFETY FEATURE

By loosening cap 1/2 turn, the four pressure vent holes will show the operator if line is under pressure.

### ACME THREAD

Assures longer wear and greater strength, which allows for speed of pig insertion.



### KNOCK-OFF CAP

Eliminates the need for special tools. Wrench also available upon request.

### PIG RAM

Assures pig entering flow line and allows for an extra outlet for a gauge or coupling.

### OUTLET

For gauge or coupling.

Weld End Available

**Pig Entry Tee (threaded ends)**  
Figure 1

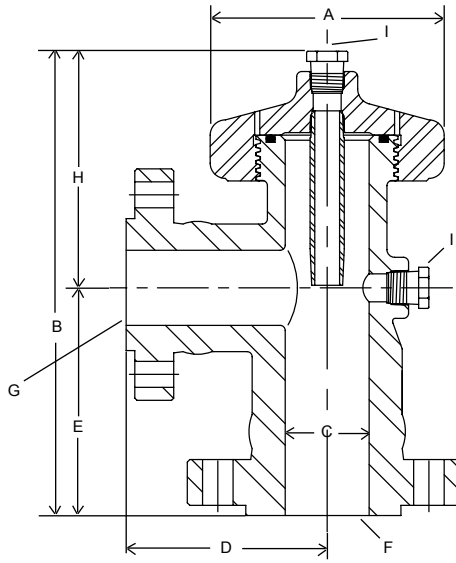
**Figure 1 Table (mm)**

THD x THD	2" NPT x 2" NPT	3" NPT x 2" NPT	3" NPT x 3" NPT	4" NPT x 4" NPT
<b>A</b>	5.75 (146.1)	6.75 (171.5)	6.75 (171.5)	8.50 (215.9)
<b>B (REF)</b>	8.75 (222.3)	10.00 (254.0)	11.38 (289.1)	13.25 (336.5)
<b>C</b>	2.06 (52.3)	3.06 (77.7)	3.06 (77.7)	4.03 (102.4)
<b>D</b>	2.50 (63.5)	3.00 (76.2)	4.00 (101.6)	4.50 (114.3)
<b>E</b>	2.75 (69.9)	4.00 (101.6)	4.00 (101.6)	4.50 (114.3)
<b>F</b>	2" NPT	3" NPT	3" NPT	4" NPT
<b>G</b>	2" NPT	2" NPT	3" NPT	4" NPT
<b>H (REF)</b>	6.00 (152.4)	6.00 (152.4)	7.38 (187.5)	8.75 (222.3)
<b>I</b>	1/2" NPT	1/2" NPT	1/2" NPT	1/2" NPT

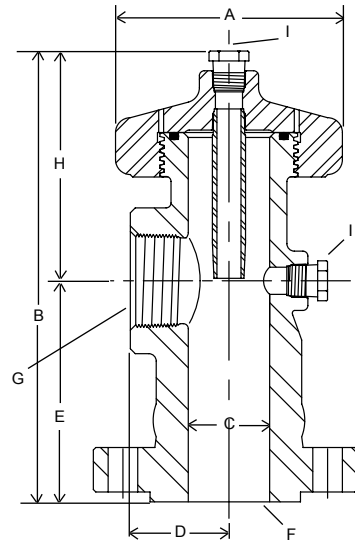
Additional configurations available. Dimensions are approximate. Contact Stream-Flo for specifications.

Stream-Flo Crown pig entry tees are available in alloy steel for flanged, weld end and threaded end connections for sizes 2", 3" and 4". Ductile iron tees in threaded end connections are available in sizes 2" and 3"

only. Working pressure is up to 2000 psi in either right angle or inline designs. Flange connections are stocked in Schedule 40 but are also available in Schedule 80.



**Pig Entry Tee (flanged ends)**  
Figure 2\*



**Pig Entry Tee (flanged x threaded ends)**  
Figure 3\*

Figure 2 Table (mm)

FLANGED x FLANGED	2" Class 300 RF x 2" Class 300 RF	2" Class 600 RF x 2" Class 600 RF	3" Class 300 RF x 2" Class 300 RF	3" Class 300 RF x 3" Class 300 RF	3" Class 600 RF x 2" Class 600 RF	3" Class 600 RF x 3" Class 600 RF
A	5.75 (146.1)	5.75 (146.1)	6.75 (171.5)	6.75 (171.5)	6.75 (171.5)	6.75 (171.5)
B REF.	10.69 (271.5)	11.06 (280.9)	†13.31 (338.1)	12.50 (317.5)	†13.31 (338.1)	13.00 (330.2)
C	2.06 (52.3)	2.06 (52.3)	3.06 (77.7)	3.06 (77.7)	3.06 (77.7)	3.06 (77.7)
D	4.44 (112.8)	4.81 (122.1)	†7.13 (181.1)	6.50 (165.1)	†7.13 (181.1)	7.00 (177.8)
E	4.69 (119.1)	5.06 (128.5)	†7.63 (193.8)	6.50 (165.1)	†7.63 (193.8)	7.00 (177.8)
F	2" Class 300 RF	2" Class 600 RF	3" Class 300 RF	3" Class 300 RF	3" Class 600 RF	3" Class 600 RF
G	2" Class 300 RF	2" Class 600 RF	2" Class 300 RF	3" Class 300 RF	2" Class 600 RF	3" Class 600 RF
H	6.00 (152.4)	6.00 (152.4)	†5.69 (144.5)	6.00 (152.4)	†5.69 (144.5)	6.00 (152.4)
I	1/2" NPT	1/2" NPT	1/2" NPT	1/2" NPT	1/2" NPT	1/2" NPT
FLANGED x FLANGED	4" Class 300 RF x 2" Class 300 RF	4" Class 300 RF x 3" Class 300 RF	4" Class 300 RF x 4" Class 300 RF	4" Class 600 RF x 2" Class 600 RF	4" Class 600 RF x 3" Class 600 RF	4" Class 600 RF x 4" Class 600 RF
A	8.50 (215.9)	8.50 (215.9)	8.50 (215.9)	8.50 (215.9)	8.50 (215.9)	8.50 (215.9)
B REF.	16.25 (412.8)	16.25 (412.8)	16.25 (412.8)	17.00 (412.8)	17.00 (412.8)	17.25 (438.2)
C	4.03 (102.4)	4.03 (102.4)	4.03 (102.4)	4.03 (102.3)	4.03 (102.3)	4.03 (102.3)
D	6.12 (155.4)	7.00 (177.8)	7.50 (190.5)	6.50 (165.1)	7.31 (185.7)	8.50 (215.9)
E	7.50 (190.5)	7.50 (190.5)	7.50 (190.5)	8.25 (209.6)	8.25 (209.6)	8.50 (215.9)
F	4" Class 300 RF	4" Class 300 RF	4" Class 300 RF	4" Class 600 RF	4" Class 600 RF	4" Class 600 RF
G	2" Class 300 RF	3" Class 300 RF	4" Class 300RF	2" Class 600 RF	3" Class 600 RF	4" Class 600 RF
H	8.75 (222.3)	8.75 (222.3)	8.75 (222.3)	8.75 (222.3)	8.75 (222.3)	8.75 (222.3)
I	1/2" NPT	1/2" NPT	1/2" NPT	1/2" NPT	1/2" NPT	1/2" NPT

Figure 3 Table (mm)

FLANGED x THREADED	2" Class 300 x 2" NPT	2" Class 600 x 2" NPT	3" Class 150 x 2" NPT	3" Class 300 x 2" NPT	3" Class 600 x 2" NPT	4" Class 300 x 2" NPT
A	5.75 (146.1)	5.75 (146.1)	6.75 (171.5)	6.75 (171.5)	6.75 (171.5)	8.50 (215.9)
B REF.	10.69 (271.5)	11.06 (280.9)	11.88 (301.8)	12.06 (306.3)	12.44 (316.0)	15.31 (388.9)
C	2.06 (52.3)	2.06 (52.3)	3.06 (77.7)	3.06 (77.7)	3.06 (77.7)	4.03 (102.4)
D	2.50 (63.5)	2.50 (63.5)	3.00 (76.2)	3.00 (76.2)	3.00 (76.2)	5.75 (146.1)
E	4.69 (119.1)	5.06 (128.5)	5.88 (149.4)	6.06 (153.9)	6.44 (163.6)	6.56 (166.6)
F	2" Class 300 RF	2" Class 600 RF	3" Class 150 RF	3" Class 300 RF	3" Class 600 RF	4" Class 300 RF
G	2" NPT	2" NPT	2" NPT	2" NPT	2" NPT	2" NPT
H	6.00 (152.4)	6.00 (152.4)	6.00 (152.4)	6.00 (152.4)	6.00 (152.4)	8.75 (222.3)
I	1/2" NPT	1/2" NPT	1/2" NPT	1/2" NPT	1/2" NPT	1/2" NPT

Additional configurations available. Dimensions are approximate. Contact Stream-Flo for specifications.

\* Some pig entry tees may be manufactured of welded components.

† New dimensions for products manufactured after June 2005.