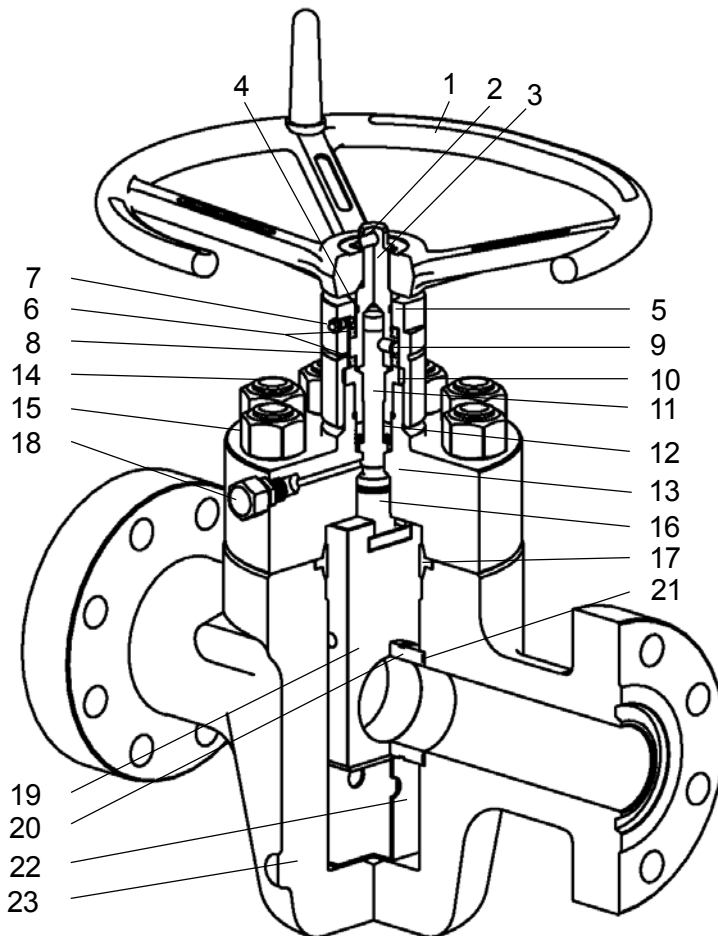




Crown Model SL Gate Valve



Parts List

1	handwheel
2	quick release pin
3	stem adapter
4	o-ring
5	bearing housing
6	thrust bearing
7	grease zert
8	o-ring
9	shear pin
10	packing retainer
11	stem
12	stem packing
13	bonnet
14	stud
15	nut
16	lift nut
17	bonnet seal
18	grease fitting
19	gate
20	seat
21	seat seal
22	gate guide
23	body

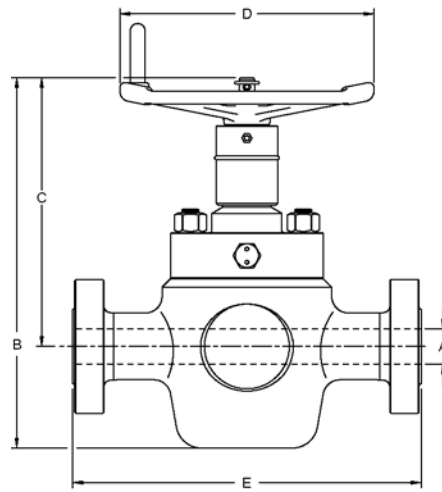
The Crown Model SL gate valve is a bidirectional valve that utilizes a slab gate and floating seats to provide sealing in a wide variety of applications. This valve is available from 2000 to 15,000 psi working pressures and can be supplied in sizes up to 7¹/₁₆" x 6³/₈".

Design and Construction Features:

- Forged valve body and bonnet.
- Floating seats and solid slab gate provides metal-to-metal, gate-to-seat and seat to-body seals.
- Non-elastomeric seat-to-body seals enhance low pressure sealing.
- Non-rising stem has backseating capability allowing stem packing and bearings to be replaced under pressure.
- Stem packing is spring loaded non-elastomeric material.
- Shear pin on stem provides over torque protection.
- Pressure energized metal-to-metal bonnet seal.
- No body penetrations. For body lubrication, one grease fitting is provided on the bonnet above the stem backseat.
- Body cavity is filled with grease to lubricate components and prevent accumulation of foreign materials or hydrates.
- Full bore/thru-conduit flow with no discontinuities at sealing surfaces minimizes pressure drop and turbulence.
- Handwheel attached with quick-release pin for easy removal.



Crown Gate Valves



Dimensional Data

psi	Size	A	B	C	D	E	N	T	Wt
2000	2 1/16	2.06	19.75	14.63	11.0	11.62	12.0	15	170
	2 9/16	2.56	20.81	15.69	12.5	13.12	14.0	15	220
	3 1/8	3.19	24.00	16.25	12.5	14.12	18.5	17	280
	4 1/16	4.12	27.50	18.00	16.0	17.12	23.5	25	400
3000	2 1/16	2.06	20.38	15.19	12.5	14.62	12.0	19	190
	2 9/16	2.56	21.44	16.25	12.5	16.62	14.0	22	235
	3 1/8	3.19	24.19	16.94	16.0	17.12	18.5	25	320
	4 1/16	4.12	28.12	18.81	20.0	20.12	23.5	33	515
	5 1/8	5.12	30.12	20.69	20.0	24.12	29.0	48	850
	7 1/16	6.38	35.38	21.75	20.0	24.12	36.0	82	1150
5000	2 1/16	2.06	20.38	15.19	12.5	14.62	12.0	26	192
	2 9/16	2.56	21.44	16.25	12.5	16.62	14.0	29	235
	3 1/8	3.19	24.69	16.94	16.0	18.62	18.5	38	335
	4 1/16	4.12	28.56	18.81	20.0	21.62	23.5	52	525
	5 1/8	5.12	33.56	20.69	26.0	28.62	29.0	83	850
	7 1/16	6.38	35.88	22.25	26.0	29.00	36.0	148	1500
10,000	2 1/16	2.06	20.69	15.19	16.0	20.50	12.0	53	280
	2 9/16	2.56	21.69	16.38	20.0	22.25	14.0	58	420
	3 1/16	3.06	24.81	16.94	20.0	24.38	18.5	71	495
	4 1/16	4.06	29.31	18.81	26.0	26.38	23.5	113	875
	5 1/8	5.12	31.31	20.69	26.0	29.00	29.0	265	1240
15,000	2 1/16	2.06	22.75	15.88	16.0	19.00	14.0	70	410
	2 9/16	2.56	24.00	16.88	20.0	21.00	15.5	115	505
	3 1/16	3.06	27.50	18.25	20.0	23.56	19.0	140	790

Dimensions in inches

N = number of turns required to open

T = opening torque at full differential pressure in ft-lbs (may vary depending on service conditions)

Wt = lbs

Trim Chart

Service	Trim	Mat Class	Body & Bonnet	Bonnet Seal	Bonnet Gate ⁽²⁾	Seat ⁽²⁾	Stem
general oilfield oil and gas	T21	AA	alloy steel	CS	alloy steel	alloy steel	alloy steel
general with slight CO ₂ corrosion	T22	BB	alloy steel	SS	13 Cr SS	13 Cr SS	17-4 PH
corrosive with high CO ₂	T23	CC	13 Cr SS	SS	13 Cr SS	13 Cr SS	17-4 PH
SOG	T24	DD	alloy steel	SS	alloy steel	alloy steel	17-4 PH
slight CO ₂ corrosion and SOG	T25	EE	alloy steel	SS	13 Cr SS	13 Cr SS	17-4 PH
corrosive with high CO ₂ and SOG	T26	FF	13 Cr SS	SS	13 Cr SS	13 Cr SS	17-4 PH
general oilfield low temp -50° F	T36	AA	alloy steel	CS	alloy steel	alloy steel	alloy steel
SOG low temp -50° F	T37	DD	alloy steel	SS	alloy steel	alloy steel	17-4 PH
extremely corrosive	T78	HH	CRA ⁽¹⁾	CRA	CRA	CRA	CRA

Materials subject to change without notice. Special trims available.

SOG sour oil and gas H₂S NACE MR0175

(1) or Alloy Steel Clad 625

(2) hardfaced or surface hardened