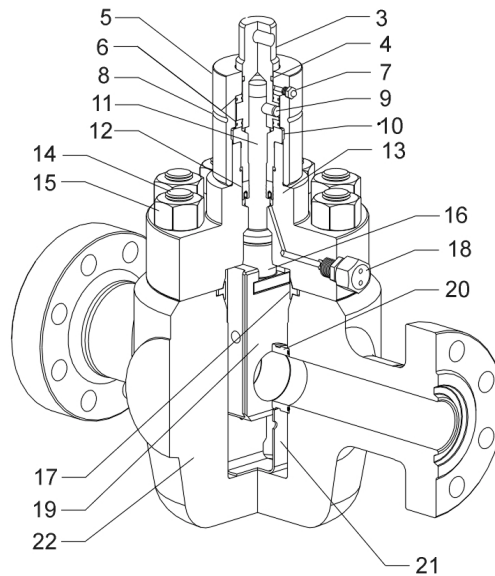


Crown Model SL Gate Valve



Model SL Gate Valve Parts List

No.	Part	No.	Part
1	Handwheel (not shown)	12	Stem Packing
2	Quick Release Pin (not shown)	13	Bonnet
3	Stem Adapter	14	Stud
4	O-Ring	15	Nut
5	Bearing Housing	16	Lift Nut
6	Thrust Bearing	17	Bonnet Seal
7	Grease Zert	18	Grease Fitting
8	O-Ring	19	Gate
9	Shear Pin	20	Seat
10	Gland Nut	21	Gate Guide
11	Stem	22	Body

The Crown Model SL gate valve is a bidirectional valve that utilizes a slab gate and floating seats to provide sealing in a wide variety of applications.

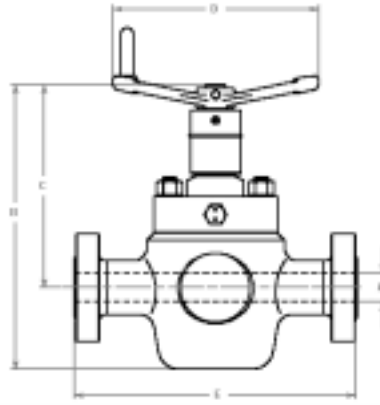
This valve is available at 2000 and 15,000 psi working pressures and can be supplied in sizes up to 7¹/₁₆" x 6³/₈".

Design and Construction Features:

- Nonrising stem has back seating capability allowing packing and stem bearings to be replaced under pressure.
- Shear pin on stem for over-torque prevention.
- Floating seats and gate provide metal-to-metal, gate-to-seat and seat-to-body seals.
- Body cavity is filled with grease to prevent accumulation of foreign materials or hydrates. One safety-capped grease fitting provided on the bonnet so that grease can be added at any time.
- Seats can be easily replaced on-line; solid one-piece slab gate; metal-to-metal bonnet seal.
- Full bore/thru-conduit flow and no discontinuities at sealing surfaces minimize pressure drop and eliminate turbulence.
- Stem packing is spring-loaded nonelastomeric material.
- Solid one-piece slab gate; metal-to-metal bonnet seal; no body penetrations.
- Handwheel attached with quick-release clip pin.
- Forged valve body and bonnet.



Crown Gate Valves



Model SL Gate Valve Dimensional Data

Size	A	B	C	D	E	N	T	Wt
2000 psi Working Pressure								
2 1/16"	2.06	19.75	14.63	11.0	11.62	11.5	16	153
2 9/16"	2.56	20.81	15.69	13.0	13.12	14.0	17	190
3 1/8"	3.12	24.00	16.25	13.0	14.12	18.5	20	312
4 1/16"	4.12	27.50	18.00	16.0	17.12	23.5	24	525
3000 psi Working Pressure								
2 1/16"	2.06	19.81	14.63	13.0	14.62	11.5	23	192
2 9/16"	2.56	20.88	15.69	13.0	16.62	14.0	25	235
3 1/8"	3.12	24.12	16.38	16.0	17.12	18.5	29	320
4 1/16"	4.12	27.62	18.12	20.0	20.12	23.5	35	580
5 1/8"	5.12	32.5	20.75	22.0	24.12	29.0	60	980
7 1/16"	6.38	38.38	23.25	22.0	24.12	36.0	75	1272
5000 psi Working Pressure								
2 1/16"	2.06	19.81	14.63	13.0	14.62	11.5	39	192
2 9/16"	2.56	20.88	15.69	13.0	16.62	14.0	42	235
3 1/8"	3.12	24.12	16.38	16.0	18.62	18.5	49	334
4 1/16"	4.12	27.62	18.12	20.0	21.62	23.5	59	650
5 1/8"	5.12	33.00	21.25	26.0	28.62	29.0	90	1230
7 1/16"	6.38	38.88	23.75	28.0	29.00	36.0	125	1570
10,000 psi Working Pressure								
2 1/16"	2.06	20.12	14.63	16.0	20.50	11.5	78	278
2 9/16"	2.56	21.12	15.81	16.0	22.25	14.0	85	421
3 1/16"	3.06	24.25	16.38	16.0	24.38	18.5	98	494
4 1/16"	4.06	30.25	19.50	20.0	26.38	24.0	172	875
5 1/8"	5.13	30.75	20.12	26.0	29.00	29.0	204	1240

Dimensions in inches
 N = number of turns required to open
 T = operating torque at full differential pressure in ft-lbs
 Wt = in lbs

Model SL Gate Valve Trim Chart

Service	Trim	Mat Class	Body and Bonnet	Bonnet Seal	Gate	Seat	Stem
General Oilfield Oil and Gas	T21	AA	Alloy Steel	CS	Alloy Steel ⁽²⁾	Alloy Steel ⁽³⁾	Alloy Steel
General with Slight CO ₂ Corrosion	T22	BB	Alloy Steel	SS	410 SS ⁽²⁾	410 SS ⁽³⁾	17-4 PH ⁽³⁾
Corrosive with High CO ₂	T23	CC	12 Cr SS	SS	410 SS ⁽²⁾	410 SS ⁽³⁾	17-4 PH ⁽³⁾
SOG	T24	DD	Alloy Steel	SS	Alloy Steel HF	Alloy Steel HF	17-4 PH ⁽³⁾
Slight CO ₂ Corrosion and SOG	T25	EE	Alloy Steel	SS	410 SS HF	410 SS HF	17-4 PH ⁽³⁾
Corrosive with High CO ₂ and SOG	T26	FF	12 Cr SS	SS	410 SS HF	410 SS HF	17-4 PH ⁽³⁾
General Oilfield Low Temp -50° F	T36	AA	Alloy Steel	SS	Alloy Steel ⁽²⁾	Alloy Steel ⁽³⁾	Alloy Steel
SOG Low Temp -50° F	T37	DD	Alloy Steel	SS	Alloy Steel HF	Alloy Steel HF	17-4 PH ⁽³⁾
Extremely Corrosive	T78	HH	Solid CRA ⁽¹⁾	Inconel	CRA HF	CRA HF	CRA

Materials subject to change without notice. Special trims available.

SOG Sour Oil and Gas H₂S NACE MR0175
 (1) or Low Alloy Steel Clad Alloy 625
 (2) Nitrided or Chrome Plated
 (3) Nitrided