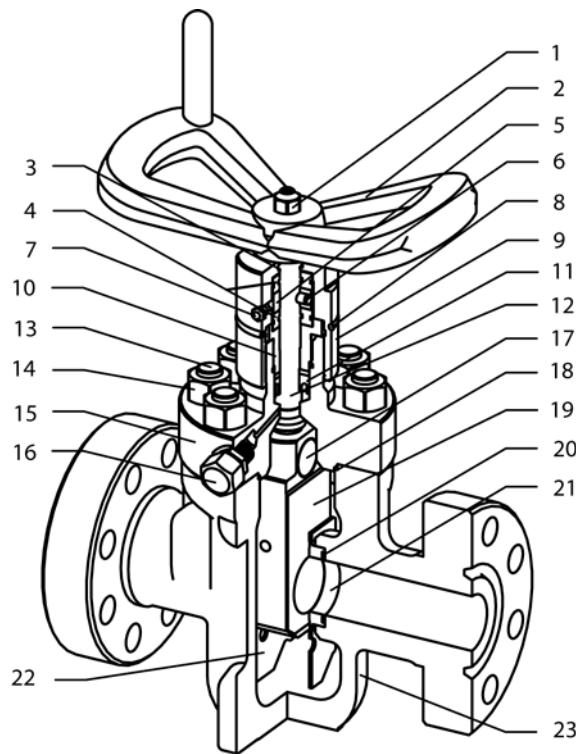




## Crown Model SF Gate Valve



### Parts List

1	nut
2	handwheel
3	o-ring
4	thrust bearing
5	bearing retainer bushing
6	bearing retainer pin
7	bearing grease fitting
8	o-ring
9	bearing housing
10	packing retainer
11	stem packing
12	stem
13	stud
14	nut
15	bonnet
16	grease fitting
17	lift nut
18	bonnet seal
19	gate
20	seat seal
21	seat
22	gate guide
23	body

*Model SF-6 Shown*

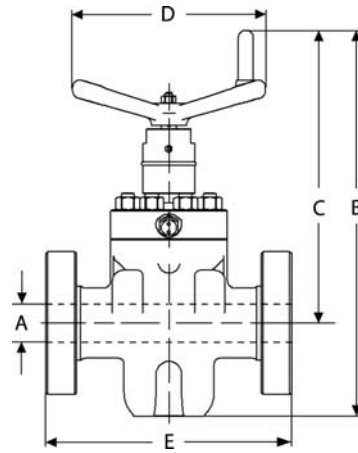
The Crown Model SF gate valve is a bidirectional valve that utilizes a slab gate and floating seats to provide sealing in a wide variety of applications. This valve is available from 2000 to 5000 psi (Model SF-6 available to 6650 psi) working pressures and can be supplied in sizes up to 4<sup>1/16</sup>".

### Design and Construction Features:

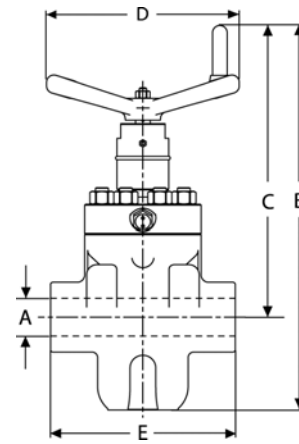
- Integral cast steel body and one piece bonnet.
- Floating seats and solid slab gate provides metal-to-metal, gate to seat and seat to body seals.
- Non-elastomeric seat face and corner seal ring enhances low pressure sealing. The non-elastomeric seal ring is between the seat and body on the Model SF-6.
- Seats can be easily replaced on-line.
- Non-rising stem has backseating capability allowing stem packing and bearings to be replaced under pressure.
- Roller thrust bearings minimize valve operating torque.
- No body penetrations; for body lubrication, one grease fitting is provided on the bonnet above the stem backseat.
- Body cavity is filled with grease to lubricate components and prevent accumulation of foreign materials or hydrates.
- Full bore / thru-conduit flow with no discontinuities at sealing surfaces minimizes pressure drop and turbulence.



# Crown Gate Valves



Flanged End Valve



Threaded End Valve

## Dimensional Data

psi (MPa)	Size	(mm)	A	B	C	D	E		N	WT	
							flanged	threaded		flanged	threaded
2000 (13.8)	2 1/16	(52)	2.06	23.69	18.75	11.0	11.62	9.83	13.0	105	90
	2 9/16	(65)	2.56	25.50	19.88	12.5	13.12	11.60	15.5	145	130
	3 1/8	(79)	3.19	28.94	21.81	12.5	14.12	11.69	20.0	210	190
	4 1/16	(103)	4.12	34.50	25.56	16.0	17.12	-	24.5	400	-
3000 (20.7)	2 1/16	(52)	2.06	24.31	19.00	12.5	14.62	9.83	13.0	170	125
	2 9/16	(65)	2.56	26.06	19.88	12.5	16.62	12.25	15.5	225	150
	3 1/8	(79)	3.19	29.75	22.31	16.0	17.12	11.69	20.0	290	235
	4 1/16	(103)	4.12	35.19	26.06	20.0	20.12	-	24.5	510	-
5000 (34.5) 6650* (45.9)	2 1/16	(52)	2.06	24.31	19.00	12.5	14.62	9.83	13.0	170	125
	2 9/16	(65)	2.56	26.06	19.88	12.5	16.62	12.25	15.5	225	150
	3 1/8	(79)	3.19	29.69	22.31	16.0	18.62	11.69	20.0	330	235
	4 1/16	(103)	4.12	35.38	26.06	20.0	21.62	-	24.5	600	-

Dimensions in inches  
N = number of turns required to open

WT = lbs  
\*6650 PSI available in Model SF-6 only

## Trim Chart

Service	Trim	Matl Class	Body & Bonnet	Bonnet		Gate (1)	Seat (1)	Stem
				Seal	Seal			
general oilfield oil and gas	T-21	AA	alloy steel	CS	alloy steel	alloy steel	alloy steel	alloy steel
general oilfield low temp -50 °F	T-36	AA	alloy steel	CS	alloy steel	alloy steel	alloy steel	alloy steel
general with slight CO <sub>2</sub> corrosion	T-22	BB	alloy steel	SS	13 Cr SS	17-4 PH	17-4 PH	17-4 PH
corrosive with high CO <sub>2</sub>	T-23	CC	13 Cr SS	SS	13 Cr SS	17-4 PH	17-4 PH	17-4 PH
SOG	T-24	DD-NL	alloy steel	SS	alloy steel	17-4 PH	alloy steel	alloy steel
SOG	T-24N	DD-NL	alloy steel	SS	alloy steel	17-4 PH	CRA	CRA
SOG	T-24Z	DD-0.5/ZZ	alloy steel	SS	alloy steel	17-4 PH	17-4 PH	17-4 PH
SOG	UD	DD-NL	alloy steel	CS	alloy steel	alloy steel	alloy steel	alloy steel
SOG low temp -50 °F	T-37	DD-NL	alloy steel	SS	alloy steel	17-4 PH	alloy steel	alloy steel
slight CO <sub>2</sub> corrosion and SOG	T-25	EE-0.5/ZZ	alloy steel	SS	13 Cr SS	17-4 PH	17-4 PH	17-4 PH
slight CO <sub>2</sub> corrosion and SOG	T-25N	EE-NL	alloy steel	SS	13 Cr SS	17-4 PH	CRA	CRA
corrosive with high CO <sub>2</sub> and SOG	T-26	FF-0.5/ZZ	13 Cr SS	SS	13 Cr SS	17-4 PH	17-4 PH	17-4 PH
corrosive with high CO <sub>2</sub> and SOG	T-26N	FF-NL	13 Cr SS	SS	13 Cr SS	17-4 PH	CRA	CRA
extremely corrosive	T-78	HH-NL	CRA	CRA	CRA	CRA	CRA	CRA

SOG sour oil and gas H<sub>2</sub>S NACE MR0175  
(1) hardfaced or surface hardened

Materials subject to change without notice. Special trims available.